



BY APPOINTMENT TO
HER MAJESTY THE QUEEN
JEWELLERS, GOLDSMITHS & SILVERSMITHS
INCORPORATING THE CROWN JEWELLER
MAPPIN & WEBB LTD
LONDON



BY APPOINTMENT TO
HRH THE PRINCE OF WALES
SILVERSMITHS
MAPPIN & WEBB LTD
LONDON

Mappin & Webb

L O N D O N

OUR SILVERSMITH ATELIER



BY APPOINTMENT TO
HER MAJESTY THE QUEEN
JEWELLERS, GOLDSMITHS & SILVERSMITHS
INCORPORATING THE CROWN JEWELLER
MAPPIN & WEBB LTD
LONDON



BY APPOINTMENT TO
HRH THE PRINCE OF WALES
SILVERSMITHS
MAPPIN & WEBB LTD
LONDON

Mappin & Webb

L O N D O N

OUR SILVERSMITH ATELIER

HANDCRAFTED HERITAGE

For more than two centuries, Mappin & Webb has been renowned for its fine craftsmanship, exceptional quality and timeless design. Its quintessentially British name is synonymous with royalty throughout the world.

The story begins in 1775, when Jonathan Mappin founded a silver workshop in Sheffield. His vision was to craft exquisite silverware and he was soon enjoying success. In 1780, he was awarded the Freedom of the Company of Cutlers – a hallmark of quality in the trade.

Today, Mappin & Webb continues to be known for its classic silverware, fine jewellery and portfolio of luxury Swiss watch brands.

The expansion of our silver manufacturing with the Mappin & Webb silversmith atelier is testament to our enduring quality and craftsmanship – over 240 years after one man's vision set the company on its path.



1775
*Mappin & Webb
is founded by
Jonathan Mappin*



1859
*Charles Dickens
purchases a
Mappin & Webb
claret jug*



1860
*First Mappin &
Webb store opens in
London, at 77-78
Oxford Street*



1897
*Granted a Royal
Warrant as
silversmiths to
Queen Victoria*





GRAND DESIGNS



1900
*Houdini visits
 Mappin & Webb's
 Sheffield factory to
 acquire silver gifts*



1904
*Solid-silver bedroom
 service created for an
 Indian maharaja*



1960
*Mappin & Webb
 supplies Sir Winston
 Churchill's pocket
 watches and
 solid-gold ashtrays*

Mappin & Webb is renowned for the quality of its silver creations around the world. We are hugely proud to be expanding our silver manufacture through our own atelier, where we can continue providing the finest service to our clients – now and into the future.

We have a growing team of expert craftsmen in our silversmith atelier who seamlessly blend centuries of skill with today's cutting-edge techniques. It is their job to listen to our clients' requirements throughout the design process, firstly turning an idea or vision into artwork and, eventually, a beautifully finished piece.

As well as creating bespoke commissions, we also have a wealth of knowledge to keep your existing treasured possessions in pristine condition. Mappin & Webb's expert craftsmen undertake the full range of repairs to both antique and modern pieces. From simply repairing an existing piece to replacing a lost item, we take the greatest of care with every piece we receive.

A full quotation is always provided before work begins, and your treasured possession is fully covered by our insurance while it is with us. Dirt, marks, blemishes or scratches acquired through age or everyday wear can easily be removed to return it to its former glory.

For your peace of mind, all work that we undertake is guaranteed for 12 months. If you have a refurbishment or restoration enquiry, please contact us for more details.

THE ART OF TRADITION

Mappin & Webb remains at the heart of English society. Our elegant silverware is in the vanguard of modern British luxury, successfully marrying our rich heritage with contemporary design.

Our association with the monarchy stretches back to 1897 when, in the year of her Diamond Jubilee, Queen Victoria first granted a Royal Warrant to Mappin & Webb as silversmiths. We have held a Royal Warrant as silversmiths to each of the five subsequent sovereigns.

Today we are proud to hold a Royal Warrant as jewellers, goldsmiths and silversmiths to Her Majesty The Queen, and as silversmiths to His Royal Highness The Prince of Wales. We created a range of limited-edition silverware for Her Majesty's Silver Jubilee in 1977, a silver goblet to mark Her Majesty The Queen Mother's 80th birthday and a rose bowl on the occasion of The Queen Mother's 90th birthday.

As well as the British Royal Households, our highly skilled craftsmen have traditionally served the military and many esteemed British institutions with commemorative silverware and bespoke commissions.



1970
*Royal Warrant
Holder and Court
Jeweller Carrington
& Co (established in
1834) is acquired by
Mappin & Webb*



1980
*Granted a Royal
Warrant as
Silversmiths to
His Royal Highness
The Prince of Wales*



2012
*Mappin & Webb
craftsman appointed
as the Crown Jeweller*



2016
*A new flagship store
reopens at 132
Regent Street,
marking a new and
exciting chapter in
the house's history*





HANDS ON

From the beginning, Mappin & Webb craftsmen have endeavoured to produce some of the most outstanding examples of British craftsmanship in gold, silver and fine leather, earning the company a global reputation. It is this care, craft and attention to detail on which our company was founded and prospers to this day.

Using traditional handcraftsmanship and cutting-edge techniques in our silversmith atelier, we can create one-of-a-kind pieces, restore family heirlooms or engrave special silver items that can be passed down from one generation to the next. Our creations are built to stand the test of time.



MADE FOR YOU

Beyond our rich royal heritage, we are also hugely proud of our sporting history. Mappin & Webb craftsmen produced the original Ryder Cup and the League Cup, now known as the Carabao Cup, and have been creating trophies for Royal Ascot for the past 75 years.

Our military connections are also world-renowned: during the First World War, we delivered our Campaign watches direct to the front line for just a shilling, and our history of creating striking regimental centrepieces is among our proudest traditions, as is our continuing relationship with the British Army's Household Division.

In 2017, the 1st Battalion Irish Guards commissioned a centrepiece of a First World War Irish Guard for Her Majesty The Queen's Birthday Parade, which was presented to the Sergeants' Mess by the Colonel of the Regiment, His Royal Highness The Duke of Cambridge, on the forecourt of Wellington Barracks.

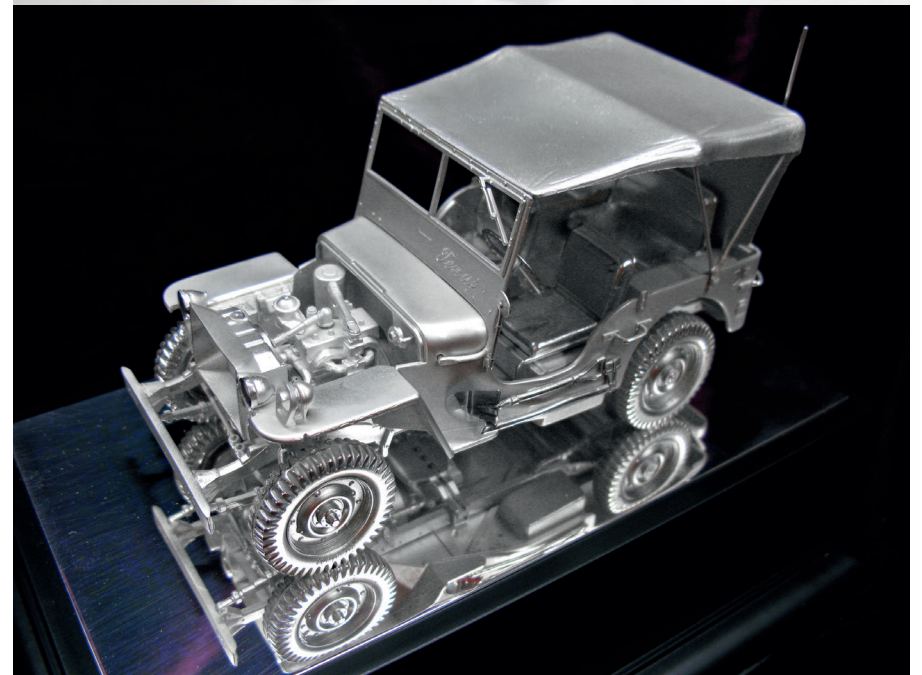
FOR YOUR EYES ONLY

At Mappin & Webb, we are pleased to offer bespoke items that are created to suit clients' precise needs. Our current and extensive silverware range includes small silver jewellery and cufflinks, unique trophies for famous racecourses and carefully crafted scale vehicles – all manufactured from technical drawings by expert craftsmen in our workshop.

Bespoke commissions are typically silver centrepieces that may commemorate an occasion in history or a personal milestone. Our craftsmen will ensure they fully understand the clients' needs before they produce a concept. Once it has been approved, the team will then work from the design to create the final piece.

As examples, a sterling silver mounted Life Guard Household Cavalry statue (top) is traditionally presented to Officers on their wedding day, and the US Willys Jeep (bottom) was specially commissioned in 2012.

If you have a bespoke commission or project in mind, our dedicated team will work closely with you to help find the most inspiring and appropriate solution to suit your needs.



ROYAL TREATMENT

Karl Bailey

Royal Warrants are a highly prized mark of recognition for individuals or companies that have supplied goods or services to the Households of Her Majesty The Queen, His Royal Highness The Duke of Edinburgh or His Royal Highness The Prince of Wales for a minimum of five years.

Karl Bailey has been working with Mappin & Webb for nearly two decades and, in 2014, was made Grantee of Mappin & Webb's Royal Warrants, working closely with the Royal Households.

'Every Royal Warrant has a Grantee whose responsibility it is to ensure that the coat of arms is displayed correctly and that the rules set out by The Lord Chamberlain's Office are adhered to. Our long-standing connection with the Royal Family ensures the Mappin & Webb name is etched in history. It is an honour to continue this association in my work.'

Today, Karl works closely with our expert silversmiths. 'My job is to understand the client's needs. Drawing on my experience, I'll produce designs for them to approve. They have complete control throughout the process and amendments can be made at their request at any time. Once we have been given permission to proceed, our silver workshop will then work from my designs to create the finished object.'





AN EXPERT TOUCH

Kevin Williams

As one of our master craftsmen and having been granted the Freedom of The Goldsmiths' Company, Kevin Williams is able to visit our clients and suggest recommendations for bespoke pieces using his incredible wealth of knowledge. 'I've been in the silver trade since 1971 and I've seen a lot of change in the silver industry in that time,' he says. 'I feel most at home when I'm at the bench making something with my hands.'

It is through craftsmen such as Kevin that Mappin & Webb continues to produce silverware of the finest quality. 'You don't stay in business for over 240 years if you're not making the best products,' he continues. 'The company is investing in the future and bringing so many craftspeople together, including young apprentices. Hopefully, in 50 years' time, some of the best silversmiths in the trade will be able to trace their roots back to Mappin & Webb's silver workshop.'

GOLD STANDARD

Mark Appleby

We are proud to be the home of the Crown Jeweller to Her Majesty The Queen. Our Director of Jewellery Services, Mark Appleby, has spent 38 years working in some of the most prestigious jewel houses in London, including almost two decades at Mappin & Webb.

Since August 2017, Mark has been in charge of looking after the most historic and famous jewels, regalia and altarpieces in the world. 'Wherever the Crown Jewels go, I go too,' he says. For instance, during the State Opening of Parliament, Mark has to be on hand to assist, as key pieces from the world-famous collection in the Tower of London, including the Imperial State Crown and English Sword of State, are integral to the ceremony. 'Being the Crown Jeweller is an amazing honour. It's a personal duty and truly is the pinnacle of my career.'

The man behind the overhaul of our jewellery workshop in 2001, Mark has introduced modern ways of working, such as CAD and laser technology, to ensure Mappin & Webb stays at the cutting edge. 'Today, a laser beam replaces the old soldering techniques, enabling a skilled operator to repair and restore jewellery to a very high standard.' Like the Crown Jeweller himself, Mappin & Webb is forward-thinking, blending innovation and heritage to deliver a service of exceptional quality.



REPAIRS AND SERVICES

Daily wear, dust and pollution can dim the shine of your treasured jewellery, but our repairs and alterations team ensure your beloved pieces remain looking their best.

Even a diamond can suffer chips and fractures on impact, and at Mappin & Webb we understand the upset that damage to a much-loved item of jewellery can bring. Our expert craftsmen are on hand with a wealth of knowledge, diligently working to deliver prompt repairs.

Our service offers a full range of jewellery and timepiece repairs, including a pearl-stringing service, stone repolishing, bracelet alterations and the certification of gemstones.

In our workshop, blemishes and scratches can easily be erased, and whether it's the simple resizing of the diamond on an engagement ring or replacing a lost item, our services are carried out with the greatest care.

Your jewellery is in very safe hands, fully covered by our insurance while in our care. All work undertaken by our craftsmen is guaranteed for 12 months.

We advise bringing in your jewellery for a full inspection once a year because, if looked after well, your beloved pieces will last a lifetime.

FOR MORE INFORMATION

If you have an idea for a bespoke commission, please contact us at MWcorporate@mappinandwebb.com or by using the details below

